



# PRECISION BOILERS

## HW “SERIES II”

## ELECTRIC HOT WATER BOILERS



## WE MAKE THE COMPLEX SIMPLE

Achieving clean, efficient energy conversion may seem complicated, but Precision Boilers makes it easy. Count on our electric boiler solutions to help you reach your sustainability goals.

# INTRODUCTION

## HW Series II Electric Hot Water Boiler

Offering reliability, precision, and performance, the Model HW Series II Electric Hot Water Boiler delivers customizable heat controls while maintaining efficiency and long-lasting durability.

### Key Features

**Durable Construction:** Heavy-duty 16-gauge cabinet and structural steel base ensure exceptional strength and longevity.

**Precise Temperature Control:** Sensor located in the outlet pipe allows for accurate temperature regulation.

**Customizable Options:** Optional features and trim available to meet specific design criteria.

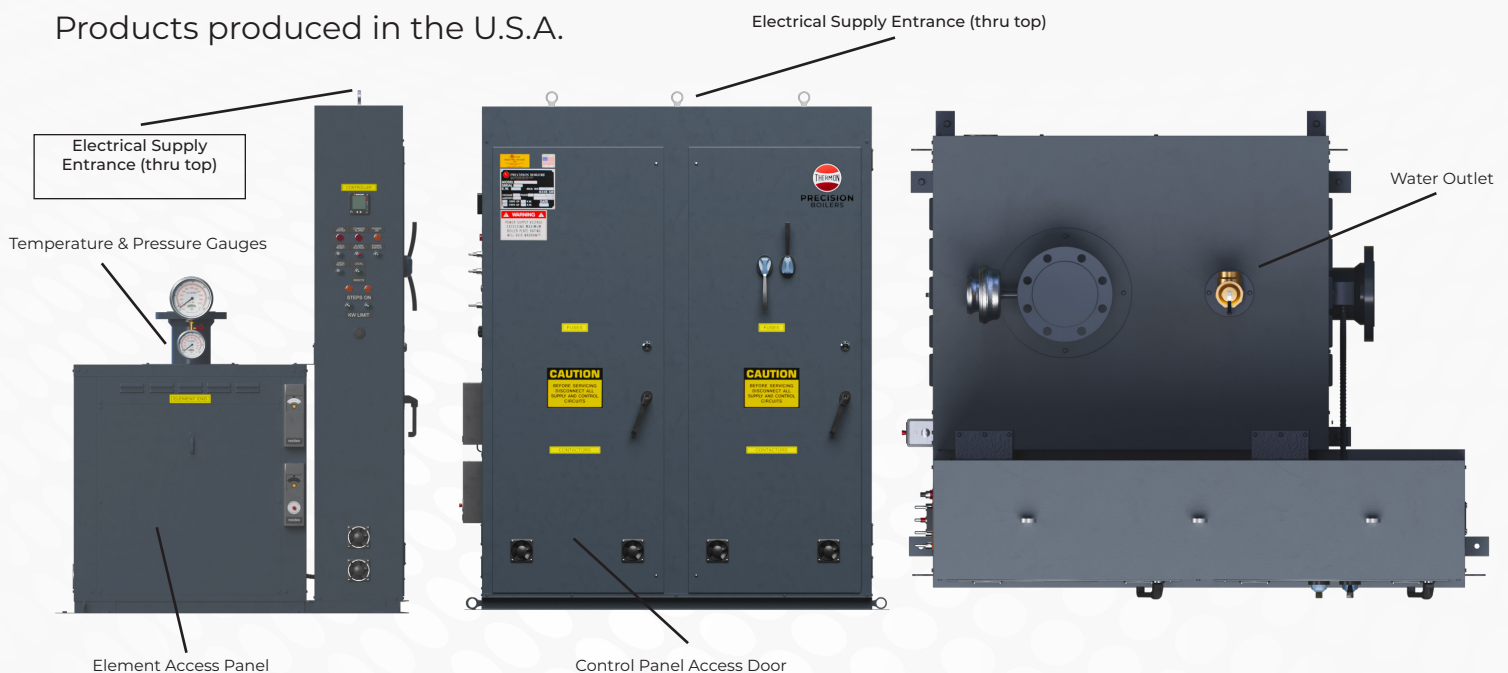
**Accurate Temperature Control:** Outlet pipe sensor for precise regulation.

**Spacious Control Cabinets:** Ample room for additional options, color-coded wiring, and easy access for service.

**Efficient Heating Elements:** Corrosion-resistant Incoloy sheath, nickel-chromium wire, U-tube design, available in 1-phase and 3-phase, limited to 75 watts per square inch for long life.

75 years' experience of producing electric boilers

Products produced in the U.S.A.



# DESIGN ADVANTAGES

## HW Series II Electric Hot Water Boiler

Precision Boilers product designs are engineered for durability, efficiency, and quality performance. Specifically crafted to deliver consistent temperature control in larger commercial applications, the HW Series II meets industry standards for safety and reliability, with custom design options to meet specific criteria.



## SPECIFICATIONS

Hot Water from: 20-421 BHP  
 BTUs/hr: 682-14,371 MBH  
 kW Rating: up to 4,212KW  
 Pressures: 150 max design PSIG  
 Voltages: up to 600V





# DESIGN ADVANTAGES

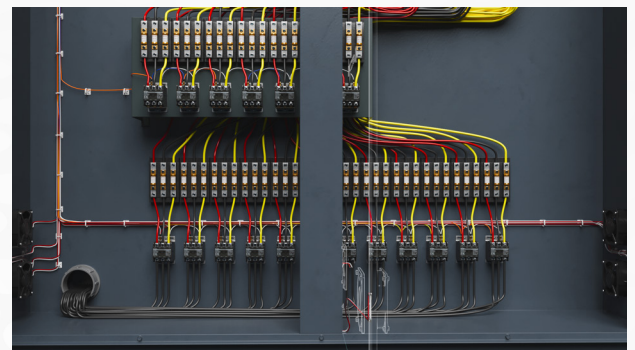
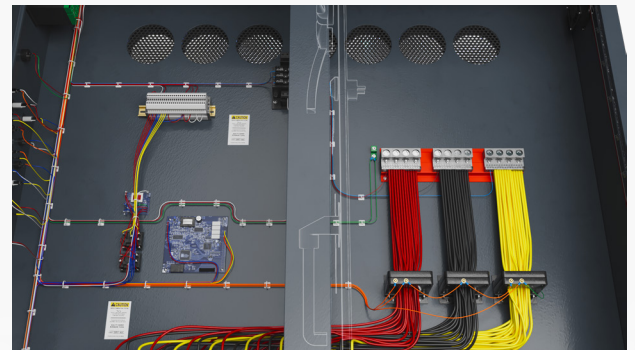
## HW Series II Electric Hot Water Boiler

### APPLICATIONS, MARKETS, AND FACILITIES

- Healthcare Facilities
- Manufacturing plants
- Hotels
- Commercial Buildings
- Museums, libraries and archival facilities
- Laboratories and cleanrooms
- Data centers
- Pharmaceutical manufacturing
- Pulp and paper production
- Textile manufacturing
- Packaging facilities
- Wood furnishing manufacturers
- Printers

### STANDARD FEATURES AND ACCESSORIES

- National Board Registered Pressure Vessel (150 PSI / 250°F)
- Full Size Structural Steel Base
- Heavy Duty Steel Boiler Vessel Housing
- Flanged Inlet and Outlet (above 3")
- ASME Safety Relief Valve(s)
- Pressure Gauge w/Cock
- Digital Electronic Temperature Readout
- Full-Port Drain Valve
- Incoloy Sheathed Elements @ 75 WSI
- Close Temperature Control
- Integral Electric Control Panel with Key-Locked Door(s)
- Internal Branch Circuit Fusing
- Magnetic Contactors rated 500,000 Cycles
- Main Supply Circuit Lugs
- 120 Volt Fused Control Transformer
- On/Off Switch with Pilot Light
- Status Pilot Light for each step
- Manual Reset Probe-type Low Water Cut-Off with Pilot Light and Test Circuit (>117 kw)
- Two Adjustable High Limit Cut-offs: (1) Auto Reset (1) Manual Reset
- Automatic Temperature with Digital Electronic temperature readout
- Manual Limit Toggle Switches (one per step)



# DESIGN ADVANTAGES

## HW Series II Electric Hot Water Boiler

### OPTIONAL EQUIPMENT AND ACCESSORIES

- Non-Fused Disconnect or Non-Auto Breaker
- Local/Remote Switch (to Accomodate BAS Analog
- Fused Disconnect or Automatic Breaker Control Signal)
- Shunt Trip Circuit Interrupter
- Flow Switch (Installed)
- Ground Fault Detection System
- Auto Air Vent (Installed)
- Multi-function power and energy meter
- Auxiliary low water cut-off (Float or Probe type)
- Watt-hour Meter (Manual or Auto Reset)
- Time Clock (24 hour or 7 day)
- Temperature Gauge (3" / Installed)
- Alarm Buzzer with Silencing Switch
- Oversize Inlet/Outlet Connections
- Safety Door Interlock
- Linear Sequence Step Control
- Low Temperature Switch/Alarm
- Design Pressures Above 150 PSI
- Remote Reset of Setpoint
- Stainless Steel Construction (210°F) for Deionized Water (to Accommodate BAS Analog Reset Signal)
- Outdoor Reset Control
- PLC and Other Interface Provisions (Consult Factory)
- Modulating SCR Controller up to 100 kA CCR rating

Contact Precision Boilers for customized options to meet your specific requirements.





# DECARBONIZATION

From healthcare and manufacturing to food and beverage, power generation and beyond, Precision Boilers offers a full line of energy-efficient commercial and industrial electric boilers and steam generators to help you reduce fossil fuel use, improve energy efficiency and lower emissions. Utilizing electricity as a power source our electric options help lower emissions and boost efficiency in your operations. As the world transitions to a future powered by more renewable resources, Precision Boilers is helping to engineer a better tomorrow by electrifying the industry with sustainable industrial heating solutions.

## **Steam & Hot Water Boilers for When Sustainability is Key**

- Reduce dependency on fossil fuels and reach sustainability targets by replacing outdated fuel-fired boilers with electric boilers.
- Lower expenses and increase energy efficiency by using electricity as a fuel source.
- Improve your operational performance with electric boilers which come online faster and are less expensive to run in standby mode than traditional fuel-fired boilers.



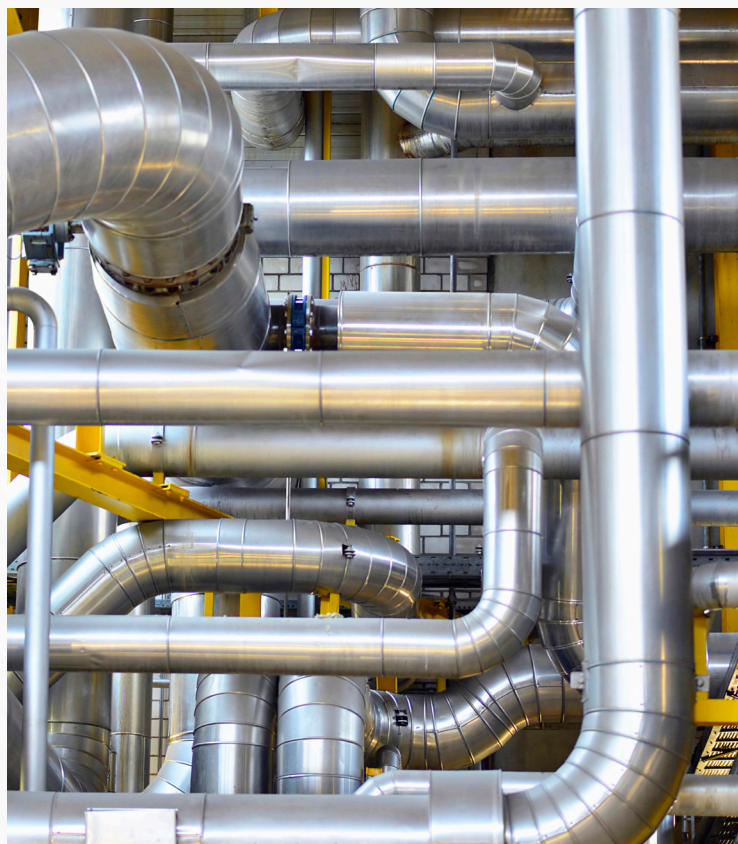
# CONTACT

## HW Series II Electric Hot Water Boiler

### CONTACT PRECISION BOILERS FOR THESE QUALITY PRODUCTS

- Electric Storage Heaters 125 to 5500 Gallons
- Electrode High Voltage Boilers
- Thermal Storage Systems Space Heating & Domestic or Process Water; Electric, Gas or Steam Fired
- Pressure Vessels Water Storage
- Circulation Heaters-Electric
- Gas or Oil-Fired Vertical Firetube Boilers and Water Heaters
- Gas or Oil-Fired WaterTube Boilers (Flextube Type)
- Chemical Bypass Feeders and Automatic Chemical Feed Systems Tanks Flash Tanks Blowdown Tanks
- Tanks with Tube Bundle(s)
- Unfired Hot Water and Steam Generators
- Boiler Feedwater Systems
- Deaerators and Surge Tanks
- Steam Superheaters-Electric

**NOTE:** In pursuing our policy of continuous development of products, PRECISION reserves the right to vary any detail in this bulletin without notice.



# DESIGN ADVANTAGES

## LIMITED WARRANTY

**PRECISION** warrants all electrical components (except pilot lights and fuses), pressure vessel and heating elements, if found defective in workmanship or material while under normal use and service within the first year of operation or until 18 months after shipment from **PRECISION'S** factory, whichever occurs first, after authorized return by purchaser to PRECISION (at purchaser's expense) and after examination discloses to PRECISION'S reasonable satisfaction to be defective. The repair or replacement of defective parts will be made by **PRECISION** without charge. **PRECISION** will not be held responsible for any field charges in connection with the removal or replacement of allegedly defective parts, nor for incidental or consequential damages. This guarantee does not include damage resulting from unsuitable water.

**NOTE:** In pursuing our policy of continuous development of products, **PRECISION** reserves the right to vary any detail in this bulletin without notice.

## Other Precision Boilers Products

### Electric Steam Generators

[Model STH: Electric High Pressure Steam Boiler](#)

### Fuel Fired Steam Generators

[Model FPS Vertical Firetube Steam Boiler](#)

### Electric Hot Water Boilers

[PCW Compac Electric Hot Water Boiler](#)

[Model HW Electric Hot Water Boiler](#)

### Fuel Fired Hot Water Boilers

[Model FPH Vertical Firetube Hot Water Boiler](#)

### Electrode Boilers

[Model HVJ High Voltage Jet Electrode Boiler](#)

### Electric Hot Water Heaters

[Model HWS Electric Water Heaters](#)

### Fuel Fired Hot Water Heaters

[Model PHWS Hot Water Generator](#)

[Model FPW Vertical Firetube Water Heater](#)

### Electric Superheaters

[Model ISH Instantaneous Superheater](#)



PCW Electric Hot Water Boiler



HW Electric Hot Water Boiler



STH Electric Steam Generator