

# THERMON'S HW SERIES II

ELECTRIC HOT WATER BOILER FROM THE PRECISION BOILER FAMILY



PRECISION  
BOILERS



A RELIABLE, PRECISE ELECTRIC HOT WATER BOILER  
BUILT FOR LARGER COMMERCIAL DEMANDS.

# INTRODUCTION

## HW SERIES II BOILER



Offering reliability, precision, and performance, the Model HW Series II Electric Hot Water Boiler delivers customizable heat controls while maintaining efficiency and long-lasting durability.

### KEY FEATURES

**Durable Construction:** Heavy-duty 16-gauge cabinet and structural steel base ensure exceptional strength and longevity.

**Precise Temperature Control:** Sensor located in the outlet pipe allows for accurate temperature regulation.

**Customizable Options:** Optional features and trim available to meet specific design criteria.

**Accurate Temperature Control:** Outlet pipe sensor for precise regulation.

**Spacious Control Cabinets:** Ample room for additional options, color-coded wiring, and easy access for service.

**Efficient Heating Elements:** Corrosion-resistant Incoloy sheath, nickel-chromium wire, U-tube design, available in 1-phase and 3-phase, limited to 75 watts per square inch for long life.

80+ years' experience of producing electric boilers

Products produced in the U.S.A.



# DESIGN ADVANTAGES

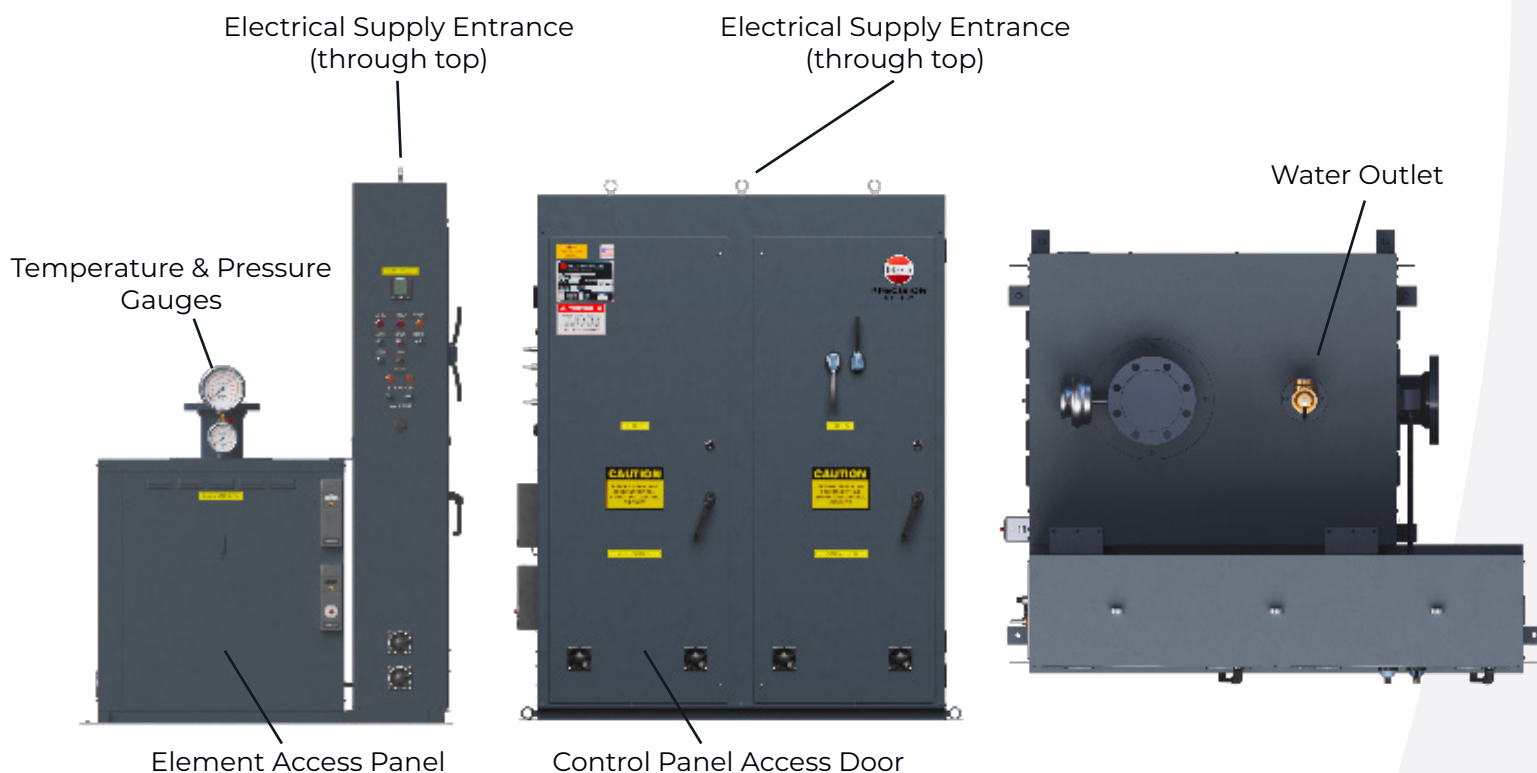
## HW SERIES II BOILER



Precision Boilers product designs are engineered for durability, efficiency, and quality performance. Specifically crafted to deliver consistent temperature control in larger commercial applications, the HW Series II meets industry standards for safety and reliability, with custom design options to meet specific criteria.

## SPECIFICATIONS

- Hot Water from: 76-421 BHP
- BTUs/hr: 682-14,371 MBH
- kW Rating: up to 3,600kW
- Pressures: 150 max design PSIG
- Voltages: up to 600V



# DESIGN ADVANTAGES

## HW SERIES II BOILER



### APPLICATIONS, MARKETS, AND FACILITIES

- Healthcare Facilities
- Manufacturing Plants
- Hotels
- Commercial Buildings
- Museums, Libraries, and Archival Facilities
- Laboratories and Cleanrooms
- Data Centers
- Pharmaceutical Manufacturing
- Pulp and Paper Production
- Textile Manufacturing
- Packaging Facilities
- Wood Furnishing Manufacturers
- Printers

### STANDARD FEATURES AND ACCESSORIES

- National Board Registered Pressure Vessel (150 PSI / 250°F)
- Full Size Structural Steel Base
- Heavy Duty Steel Boiler Vessel Housing
- Flanged Inlet and Outlet (above 3")
- ASME Safety Relief Valve(s)
- Pressure Gauge w/ Cock
- Digital Electronic Temperature Readout
- Full-Port Drain Valve
- Incoloy Sheathed Elements @ 75 WSI
- Progressive Step Sequencing Controls
- Integral Electric Control Panel with Key-Locked Door(s)
- Internal Branch Circuit Fusing
- Magnetic Contractors rated 500,000 Cycles
- Main Supply Circuit Lugs
- 120 Volt Fused Control Transformer
- On/Off Switch with Pilot Light
- Status Pilot Light for each step
- Manual Reset Probe-type Low Water Cut-Off with Pilot Light and Test Circuit (>117 kW)
- Two Adjustable High Limit Cut-offs: (1) Auto Reset, (1) Manual Reset
- Automatic Temperature with Digital Temperature Readout
- Manual Limit Toggle Switches (one per step)
- NEMA 12 Cabinet Rating
- Emergency Stop, On-board Alarm and Flow Switch





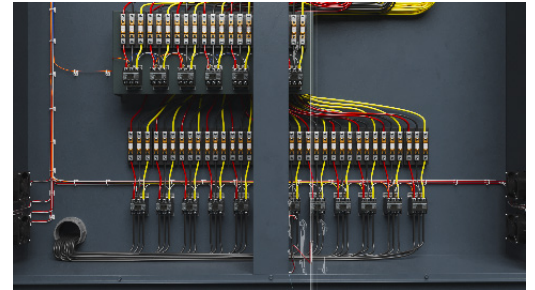
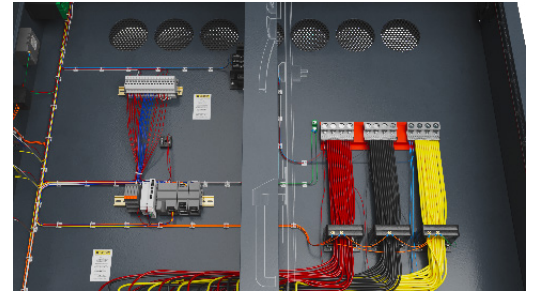
# DESIGN ADVANTAGES

## HW SERIES II BOILER



### OPTIONAL EQUIPMENT AND ACCESSORIES

- Non-Fused Disconnect
- Local/Remote Switch (to accommodate BAS Analog Fused Disconnect or Automatic Breaker Control Signal)
- Shunt Trip Circuit Interrupter
- Flow Switch (Installed)
- Ground Fault Detection System
- Auto Air Vent (Installed)
- Multi-Function Power and Energy Meter
- Auxiliary Low Water Cut-Off (Float or Probe type)
- Time Clock (24 hour or 7 day)
- Oversize Inlet/Outlet Connections
- Safety Door Interlock
- Low Temperature Switch/Alarm
- Design Pressures Above 150 PSI
- Remote Reset of Setpoint
- Stainless Steel Construction (210°F) for Deionized Water (to accommodate BAS Analog Reset Signal)
- Outdoor Reset Control
- PLC and Other Interface Provisions (Consult Factory)



Contact Precision Boilers for customized options to meet your specific requirements.



# WHY CHOOSE THERMON?

## HW SERIES II BOILER



Thermon is a diversified technology company and a global leader in industrial process heating, temperature maintenance, environmental monitoring, and temporary power distribution solutions. We deliver engineered solutions that enhance operational awareness, safety, reliability, and efficiency to deliver the lowest total cost of ownership.

Thermon offers over 250 products, software and services across multiple brands, providing a range of offerings from boilers, transportation heaters, and liquid load banks to tubing bundles and heat trace. We are the silent guardians of critical infrastructure. From the relentless demands of chemical plants and the intricate networks of rail and transit to the vital pulse of power generation, we innovate solutions that ensure optimal operation, protect critical assets, and maximize efficiency.

We care deeply about the success of our customers, the well-being of our people, and the reliability of every product we design. This drives our unwavering commitment to safety and integrity in everything we do. Through collaboration, we unite a rich legacy of expertise with a trusted global team, partnering side-by-side with our customers. We transfer the warmth needed to make life work.





# LIMITED WARRANTY

## HW SERIES II BOILER



Thermon's Precision Boilers Family warrants all electrical components (except pilot lights and fuses), pressure vessel and heating elements, if found defective in workmanship or material while under normal use and service within the first year of operation or until 18 months after shipment from Precision's factory, whichever occurs first, after authorized return by purchaser to Precision (at purchaser's expense) and after examination discloses to Precision's reasonable satisfaction to be defective. The repair or replacement of defective parts will be made by Precision without charge. Precision will not be held responsible for any field charges in connection with the removal or replacement of allegedly defective parts, nor for incidental or consequential damages. This guarantee does not include damage resulting from unsuitable water.

NOTE: In pursuing our policy of continuous development of products, Precision reserves the right to vary any detail in this bulletin without notice.

Other Thermon products: <https://thermon.com/products/>



For more information, email [info@thermon.com](mailto:info@thermon.com)